



BEAUTY  
INTEGRATION  
COMPLIANCE

# STONE PICTORIAL INSTALLATION GUIDE

STEP BY STEP VISUAL GUIDE TO EASY INSTALLATION

[www.vtegroup.co.uk](http://www.vtegroup.co.uk)

[info@vtegroup.co.uk](mailto:info@vtegroup.co.uk)

tel: 03307 00 00 30

# STONE PICTORIAL INSTALLATION GUIDE

Please refer to the STONE Panel Installation Guide for full details and how to attach to various wall types.

## POSITIONING OF THE PANELS

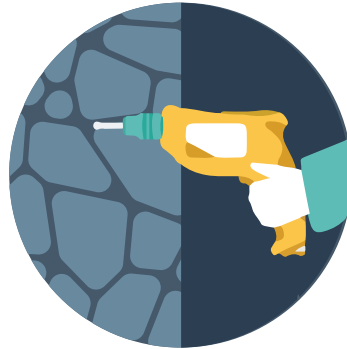
1



Measure, mark out and trim panels as required to align features.

## LOCATING AND FASTENING PANELS

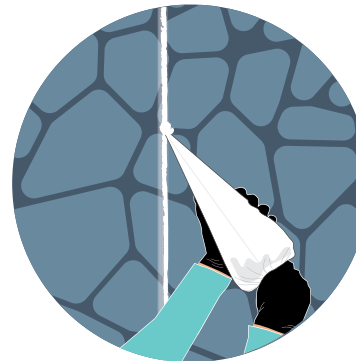
2



Raise or lower panels to align features. Pre-drill and screw in place, packing out to suit.

## INITIAL FILLING AND SHAPING

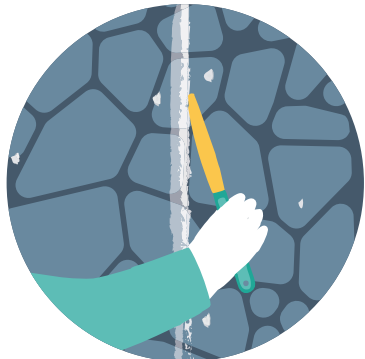
3



Use a grouting bag for the initial application of the jointing compound to cover joints and fixing locations.

## INTRODUCE THE FINAL TEXTURE

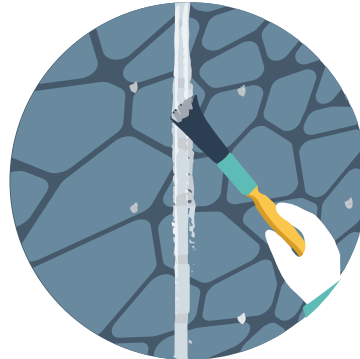
4



Shape the jointing compound to suit as it begins to go firm. The putty knife can also be used to apply the filler if required.

## THE BLENDING PROCESS

5



Introduce final texture to the jointing compound with a brush moistened with the cleaner.

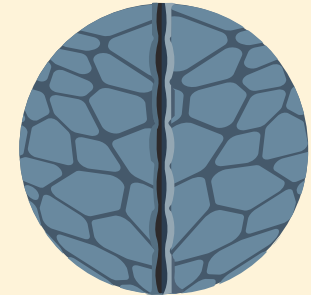
## THE DETAILING

6



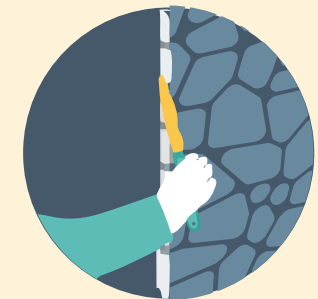
Leave for 24 hours. Sparingly apply colour solutions. Rag off, and then blend with surrounding area.

## EXAMPLE DETAILS



**CORNERS** - Raise or lower panels to align features. Mark position of corner and cut to form mitre.

Fix panels, leaving approx. 5mm gap. Apply the jointing compound and shape to suit.



**FINISHING EXPOSED EDGES** - If panel end is exposed, use the jointing compound to fill panel edge and shape to create the stone end.

