



MAKING  
SPACES  
MATTER

# MAXIBEAM

## DATA SHEET

VTECGROUP.CO.UK

03307 00 00 30 | [sales@vtecgroup.co.uk](mailto:sales@vtecgroup.co.uk)



# MAXIBEAM

## PRODUCT DATA SHEET



## PRODUCT INFORMATION

Our MaxiBeam FR Euroclass B range is a **lightweight beam system** that provides **visual style** and **acoustic absorption** simply (if required), alongside being easy to specify and fast to install.

### Applications



- For internal use across a range of sectors including commercial offices, higher education, restaurants, hotels, retail etc.
- Versatile system suitable for walls, ceilings, rafts or floor to ceiling screens.

### Composition



- Lightweight hollow-core construction with rigid outer surfaces using our specialist VFR core material. This specialist method and materials ensure the beam is more dimensionally stable. i.e. It will not warp and twist like solid timber.
- FR Laminate finish and matching edging to all visible surfaces.
- Premium grade EchoTone Acoustic Backing Board can be incorporated with the MaxiBeams.

### Standard Sizes and Weights

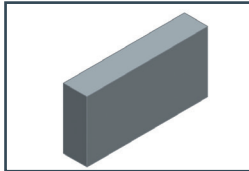
HEIGHT / DEPTH	100mm	125mm	150mm	200mm	285mm
THICKNESS	50mm	50mm	50mm	50mm	50mm
APPROX. WEIGHT	2.5 - 3.2kg per lm	2.8 - 3.5kg per lm	3.5 - 4.6kg per lm	4.8 - 5.5kg per lm	6.1 - 7.6kg per lm
Weights vary subject to the installation method and beam application.					
Beams are installed individually so the spacing is fully customizable, including random / varied spacings between beams.					
As a general rule of thumb, the minimum space between beams is the beam height and the maximum space between is 3x the beam height. Please note that some projects have had smaller or larger spacings than this rule of thumb.					

- MaxiBeam is typically manufactured to size for the project. Maximum lengths of 2980mm are possible, and where longer runs are required discreet End-To-End joiners are used.
- The most efficient lengths for production are 2980mm, 1480mm & 980mm.
- Bespoke options can be manufactured including:
  - Thicknesses
  - Heights
  - Lengths
  - Geometric & Angular Shapes
  - Angled Ends

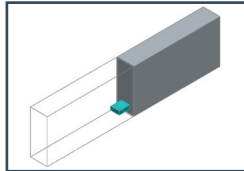
### PRODUCT INFORMATION

#### Beam End Options

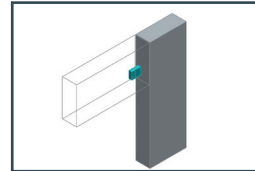
SQUARE END - NO JOINER



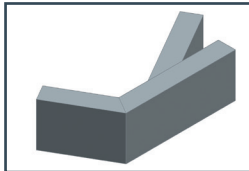
SQUARE END WITH END TO END JOINER



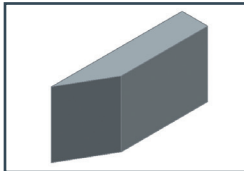
90° CONNECTION BETWEEN A VERTICAL & HORIZONTAL BEAM



MITRED CORNERS OR BESPOKE ANGLED CONNECTIONS



ANGLED END - FULLY FINISHED



#### Acoustics



- MaxiBeam is frequently installed with our Acoustic Backing Board to achieve good levels of acoustic absorption.
- Budapest Black is available in 9mm or 12mm thickness. All other colours are 12mm thick. (See pg 4 for colour options)
- Acoustic Absorption varies according to MaxiBeam centres, heights, and void depth behind the Beams. Please speak to our Technical team for details and acoustic test data.

#### Beam Finishes

- **SUPALAMI** - A range of high quality, realistic, economic and hard-wearing laminate finishes.
- Bespoke options available on request.

#### Fire Performance



MaxiBeam is a fully constructed unit that has been range-tested for fire classification Euroclass B-s2,d0 as an assembled unit. **Contact us for our test data report.**

#### Sustainability Certification



- **VOC Emission Tests** ABG/AgBB - Pass
- **BREEAM UK** - Compliance with "Exemplary" criteria on VOC emissions
- **Complies with WELL Building Standard** v2 Feature X06 VOC Restrictions - Part 1
- We are FSC® certified (FSC® C160047)  
MaxiBeam is available as FSC® Certified. Please talk to us about your specific requirements prior to quotation or specification.

#### Natural Materials

- Although MaxiBeam is renowned for its stability with our production methods and processes, panels are produced using natural products. Therefore, we cannot accept responsibility for pieces that warp, twist, expand, contract, move etc.
- Changes to temperature and humidity can also have an impact.

## PRODUCT INFORMATION

### Access and Service Integration



- The MaxiBeam system integrates well with access and service requirements, such as:
  - Access hatches at specific locations
  - Hidden doorways
  - Lighting
  - HVAC grilles
  - Smoke detectors and sprinklers
  - AV screens and cabling
- It can also be fully removable for access to the void.

### Installation - Walls, Ceilings and Rafts

- Supplied as individual beams, fully finished to avoid on-site cutting, which are then discreetly installed. Beams can be installed so they are removable if required.
- The MaxiBeam system can be fastened to any of the following substrates:
  1. No substrate (e.g. Vertical Screens)
  2. Any A2-s1,d0 substrate with a minimum density of 525 kg/m<sup>3</sup>
  3. Any A1 substrate with a minimum density of 37.5 kg/m<sup>3</sup>

There are 3 typical installation methods; Fixing Cleat, Click Fix & Screw Fix from the rear.  
**Please contact us for further information.**

### Installation - Screens



- Vertical screens can be:
  - Vertical slats
  - Horizontal slats
  - Angled and louvred slats
  - Combination of the above
- MaxiBeam screens can be fastened to almost any common ceiling or floor.
- Screen installation method will depend on the construction it is fastened to and if it needs to be removable.

### Workability

- Beams can be joined on site using discreet, machined push-fit joiner. If beams do require cutting, use standard woodworking tools.

### Antimicrobial Finish

- Our standard range of Supalami laminated finishes have been tested successfully to ISO 22196:2011, providing you with a great looking, cost-effective finish that can support better hygiene in your chosen space (only when MaxiBeam is used with a Supalami finish).
- Recognised worldwide, this test provides the highest standard of antibacterial testing available and measures the reduction over 24 hours of Staphylococcus Aureus and E-Coli bacteria, and the effectiveness of the antibacterial properties on the surface. All of the standard finishes scored > 3 which is the highest possible classification, confirming that the surfaces have a strong antibacterial effect. Please advise us before quoting if you require antimicrobial coating.

### Maintenance


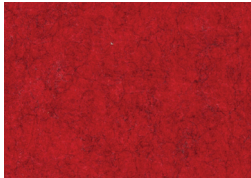

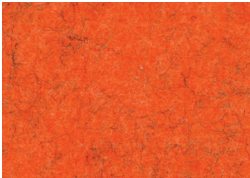




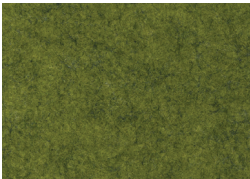
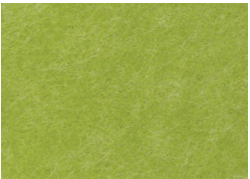
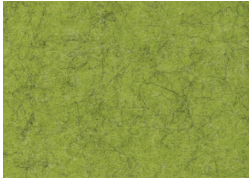
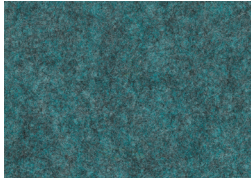


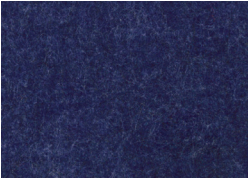





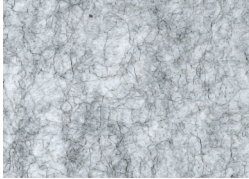

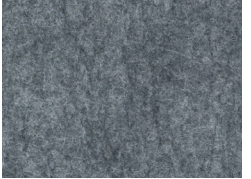
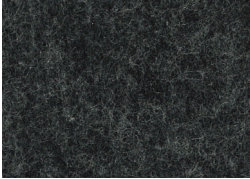

- No maintenance needed apart from occasional dusting. Any dirt deposits can be wiped off. Beams should not be subjected to moisture or wet cloths.



## ACOUSTIC BACKING COLOUR SWATCHES

OUR MOST POPULAR ACOUSTIC BACKING COLOUR - BUDAPEST BLACK



				
ROTTERDAM RED	RICHMOND RED	ONTARIO ORANGE	OAKLAND ORANGE	PANAMA PINK
				
YORKTOWN YELLOW	YOKOHAMA YELLOW	BOSTON BROWN	GENEVA GREEN	GIBRALTAR GREEN
				
GRENADA GREEN	TORONTO TEAL	TOKYO TEAL	BOLOGNA BLUE	BALTIMORE BLUE
				
BARCELONA BLUE	PALERMO PURPLE	BROOKLYN BEIGE	BERLIN BEIGE	BOGOTÁ BEIGE
				
GLASGOW GREY	GENOA GREY	GRENOBLE GREY	GUADELOUPE GREY	WARSAW WHITE