



MAKING
SPACES
MATTER

SUPASLAT

DATA SHEET

VTECGROUP.CO.UK

03307 00 00 30 | sales@vtecgroupp.co.uk

SUPASLAT

PRODUCT DATA SHEET



PRODUCT INFORMATION

Our **SupaSlat** range is a **modular slatted panel system** that gives huge creative scope with many slat options and finishes whilst enabling easy service integration, access to services and acoustic performance.

Applications



- For internal use across a range of sectors including commercial offices, higher education, restaurants, hotels, retail etc.
- Versatile system suitable for walls, ceilings or rafts.

Composition



- The slat is manufactured with our specialist VFR core which is more dimensionally stable than timber
- FR Laminate finish & matching edging to all visible surfaces.
- Premium grade EchoTone Acoustic Backing is fitted directly behind the slats. MDF cross battens on the rear of the panels hold the slats and acoustic backing together.
- Safe, non-toxic, non-irritant.

Standard Sizes

- Choose from 8 standard SupaSlat sizes (dimensions below in mm)

Product Name	Slat Width	Height	Gap	Centre	Approx Weight kg / m ²	% Open Area
SupaSlat 1-25	50	19	25	75	23.2	33%
SupaSlat 1-50	50	19	50	100	18.7	50%
SupaSlat 2-30	70	19	30	100	23.8	30%
SupaSlat 2-80	70	19	80	150	17.7	53%
SupaSlat 4-31	19	50	31	50	32.1	62%
SupaSlat 4-56	19	50	56	75	23.2	75%
SupaSlat 5-56	19	70	56	75	30.0	75%
SupaSlat 5-81	19	70	81	100	23.8	81%

Panel Sizes

- **2980mm x 300mm**
- **1480mm x 600mm**
- **1180mm x 600mm**
- **BESPOKE SIZES** - With our fully comprehensive 3D CAD and Design Services, panels are typically manufactured to bespoke sizes to suit each individual project.

Acoustics



- EchoTone acoustic backing is incorporated into the rear of the panel. Further acoustic performance can be achieved by using bulk insulation as well.
- Budapest Black - 9mm or 12mm thickness. All other colours are 12mm thick. (See pg 4 for colour options)
- Noise Reduction Coefficients (NRC) up to 1.0 can be achieved dependant on the selected SupaSlat configuration, void depth and insulation. Please speak to our Technical team for details and acoustic test data.

PRODUCT INFORMATION

<p>Slat Finishes</p>	<ul style="list-style-type: none"> - SUPALAMI A range of high quality, realistic, economic and hard-wearing laminate finishes. Bespoke options available on request.
<p>Fire Performance</p> 	<ul style="list-style-type: none"> - SUPALAMI FR Euroclass B rating is available - please contact us for test certificates.
<p>Sustainability Certification</p> 	<ul style="list-style-type: none"> - We are FSC® certified (FSC® C160047) - SupaSlat is available as FSC® Certified. Please talk to us about your specific requirements prior to quotation or specification.
<p>Natural Materials</p>	<ul style="list-style-type: none"> - Although SupaSlat is renowned for its stability with our production methods and processes, panels are produced using natural products. Therefore, we cannot accept responsibility for pieces that warp, twist, expand, contract, move etc. - Changes to temperature and humidity can also have an impact.
<p>Access and Service Integration</p> 	<ul style="list-style-type: none"> - The SupaSlat system integrates well with access and service requirements, such as: <ul style="list-style-type: none"> - Access hatches at specific locations - Hidden doorways - Lighting - HVAC grilles - Smoke detectors and sprinklers - AV screens and cabling - It can also be fully removable for access to the void.
<p>Panel Installation</p>	<ul style="list-style-type: none"> - Generally supplied as fully finished made to measure panels, however modular panels for on-site cutting are an option. - Panels are installed to common support work systems such as MF Systems or Unistrut. Please contact us for further information and drawings.
<p>Installation - Ceilings and Rafts</p>	<ul style="list-style-type: none"> - SCREW FIX Panels are screwed with black screws between the slats and through the black backing into the substrate / support work. - CLICK FIX Panels are secret fixed with a Male / Female type engagement system to a variety of substrates / support work systems.
<p>Installation - Walls</p> 	<ul style="list-style-type: none"> - SCREW FIX Panels are screwed with black screws between the slats and through the black backing into the substrate / support work. - CLICK FIX Panels are secret fixed with a Male / Female type engagement system to a variety of substrates / support work systems. - HOOK FIX Panels can be secretly fixed with timber split battens, aluminium Z's or aluminium hockey sticks (supplied by others).

PRODUCT INFORMATION

Workability

- Our SupaSlat system is supplied fully finished to avoid on-site cutting and finishing. Panels are delivered ready to fit, with full installation instructions. If slats do require cutting, use standard woodworking tools.

Antimicrobial Finish

- Our standard range of Supalami laminated finishes have been tested successfully to ISO 22196:2011, providing you with a great looking, cost-effective finish that can support better hygiene in your chosen space (only when SupaSlat is used with a Supalami finish).
- Recognised worldwide, this test provides the highest standard of antibacterial testing available and measures the reduction over 24 hours of Staphylococcus Aureus and E-Coli bacteria, and the effectiveness of the antibacterial properties on the surface. All of the standard finishes scored > 3 which is the highest possible classification, confirming that the surfaces have a strong antibacterial effect.
- Please advise us before quoting if you require antimicrobial coating.

Maintenance

- No maintenance needed apart from occasional dusting. Any dirt deposits can be wiped off. Slats should not be subjected to moisture or wet cloths.

ACOUSTIC BACKING COLOUR SWATCHES

OUR MOST POPULAR ACOUSTIC BACKING COLOUR - BUDAPEST BLACK



ROTTERDAM RED



RICHMOND RED



ONTARIO ORANGE



OAKLAND ORANGE



PANAMA PINK



YORKTOWN YELLOW



YOKOHAMA YELLOW



BOSTON BROWN



GENEVA GREEN



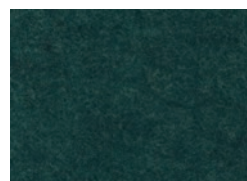
GIBRALTAR GREEN



GRENADA GREEN



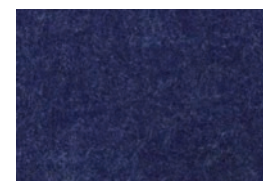
TORONTO TEAL



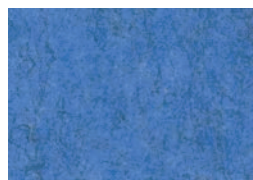
TOKYO TEAL



BOLOGNA BLUE



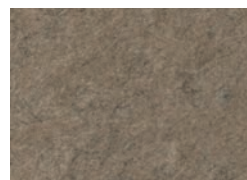
BALTIMORE BLUE



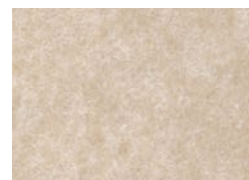
BARCELONA BLUE



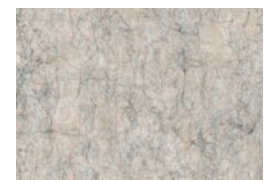
PALERMO PURPLE



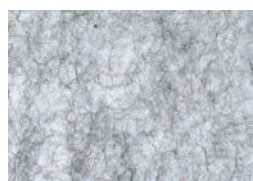
BROOKLYN BEIGE



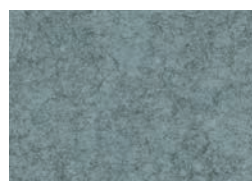
BERLIN BEIGE



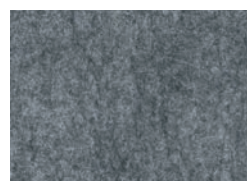
BOGOTÁ BEIGE



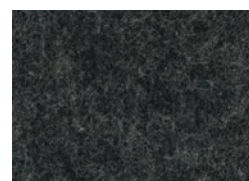
GLASGOW GREY



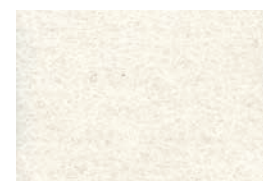
GENOA GREY



GRENOBLE GREY



GUADELOUPE GREY



WARSAW WHITE