



# SUPASLAT

## PREMIUM SLATTED PANEL SYSTEM

MODULAR TIMBER STYLE ACOUSTIC PANEL SYSTEM FOR WALLS, CEILINGS AND RAFTS.







EASY TO IMAGINE  
EASY TO SPECIFY  
EASY TO INSTALL





# We are Manufacturers and Technical Specialists.

Vtec's team of experts help to bring architectural designs to life. Walls and ceilings are surprisingly complex, so rely on us to look after all the details - saving you time, money, and worry.

- We work with you to **bring your ideas to life** and **solve design challenges**.
- As **UK manufacturers** of adaptable systems in our Cornwall factory, we provide expert knowledge, quick response times and reliable delivery.
- Our Technical Team's **capabilities** include **3D modelling** for complex ceilings and walls, ensuring precise interfaces with other elements.
- We **coordinate integration of services and access** requirements where required.
- **Detailed drawing packages** include setting-out drawings, installation sequence and critical detailing.
- Our dedicated **Project Leaders** liaise with designers, installers and our Production Team to keep the dots connected.
- We're here to **guide you through the entire process** - from initial concept and design to support and advice for the installation.

# What is SupaSlat?

A high-performing premium modular slatted wood-style panel system that is a designer's dream.

SupaSlat is a creative and functional system that adds beauty and breath to an interior. With bespoke sizes and integrated customisation, SupaSlat elevates the visual aesthetics of an interior. With size options and finishes in a variety of laminate options, SupaSlat brings charm and beauty.







OUR PROVEN SYSTEMS ARE ADAPTABLE  
AND PROVIDE BESPOKE ACOUSTIC WALL  
AND CEILING OPTIONS:

- TAILORED TO SUIT YOUR PROJECT
- HIGH VISUAL IMPACT
- UNRIVALLED ACOUSTIC PERFORMANCE

# SUPASLAT

The SupaSlat range is a design-friendly modular slatted panel system that gives huge creative scope. With an array of slat options and finishes, it offers unparalleled flexibility while seamlessly integrating service access and ensuring acoustic performance. Design premium-looking walls and ceilings with the natural beauty and charm of a wood-style look.

## WHAT ARE THE BENEFITS?

- 8 Standard profile sizes
- Hard-wearing laminate options, produced in a variety of wood-style species
- Modular system for easy installation
- FR finishing
- Acoustic solutions
- Available as FSC® Certified
- Fully finished, with no on-site cutting
- Concealed fixings
- Full access to services where required
- Bespoke and exclusive options







## **1 ELEVATE THE AESTHETICS OF INTERIOR WALL AND CEILING DESIGN**

Explore a curated range of creative slat sizes for depth and dimension and beautiful laminate options that suit any wall or ceiling system.

## **2 UPGRADE ACOUSTICS**

Our EchoTone Acoustic Backing is a high-quality board that provides increased sound control.

## **3 STREAMLINED SERVICE ACCESSIBILITY**

SupaSlat can be fully demountable or designed with integrated access hatches for discreet, easy access to services.

## **4 SEAMLESS INTEGRATION OF SERVICES**

With 3D Modelling, SupaSlat provides provision for the integration to incorporate lighting, heating, ventilation, fire detection systems and other services with ease.

## **5 EASY INSTALLATION**

SupaSlat is manufactured fully finished and made to measure. With our 3D, CAD Design Services and installation drawings, the system is supplied ready to install with no on-site cutting.

## **6 FIRE COMPLIANT**

SupaSlat's advanced fire-resistant construction and robust detailing can achieve a Euroclass B rating. Please contact us regarding Fire Certification.









## WALLS

**Add visual interest and acoustic performance.**

A seamless wall to wall design with perfect integration for AV devices. This included a concealed stage door and perfect alignment across several different elevations, including a column.



## RAFTS

**Zone a specific area.**

Easily distinguish zones to define collaborative and break-out space areas.



## SERVICE INTEGRATION

**Integrate services with ease.**

An airport lounge builds a cohesive look through the incorporation of lighting and ventilation.



## CEILINGS

**Create a unique slatted look that gives instant visual appeal.**

Complete the finishing elements of a sleek and sophisticated interior with a premium slatted ceiling. A mix of exquisite materials and superior finishes builds the aesthetic performance and value.



## COMPATIBLE INSTALLATION

**Fits to a wide range of substrates.**

Easily fix our panels to proprietary suspension systems such as MF and Unistrut etc.



## DEMOUNTABLE FOR ACCESS

**Easy access to services.**

Access hatches can also be provided to make quick access to M&E services.



## WALL TO CEILING FEATURES

**Create maximum impact.**

A contemporary wall-to-ceiling design adds a vibrant focal point that draws users into the space through a warm and inviting finish that is also supported by a premium acoustic backing board.



## BESPOKE SHAPES & SIZES

**Experiment with size and proportion.**

Let your designs be as playful as the space it exists. A major university incorporated lettering into their wall design for more cohesive brand identity.









# SPECIFYING SUPASLAT

- 1 CONSIDER THE APPLICATION
- 2 SELECT SLAT OPTIONS
- 3 SELECT FINISH
- 4 SELECT ACOUSTIC BACKING COLOUR
- 5 SELECT FSC® CERTIFICATION
- 6 CONSIDER ACCESS & SERVICE REQUIREMENTS
- 7 SELECT INSTALLATION METHOD



# SUPASLAT CONFIGURATION

Configure your SupaSlat System in seven easy steps:

## 1 CONSIDER THE APPLICATION

SupaSlat is designed to give a premium look and feel to a space with easy installation and interface.

**CEILING**

**SUSPENDED RAFT**

**WALLING SYSTEM**

**VERTICAL SCREEN**

**COMBINATION OF THE ABOVE**



## 2 SELECT SLAT OPTIONS

PRODUCT NAME	SLAT WIDTH	HEIGHT	GAP	CENTRE	APPROX. WEIGHT kg / m <sup>2</sup>	% OPEN AREA
SUPASLAT 1-25	50	19	25	75	23.2	33%
SUPASLAT 1-50	50	19	50	100	18.7	50%
SUPASLAT 2-30	70	19	30	100	23.8	30%
SUPASLAT 2-80	70	19	80	150	17.7	53%
SUPASLAT 4-31	19	50	31	50	32.1	62%
SUPASLAT 4-56	19	50	56	75	23.2	75%
SUPASLAT 5-56	19	70	56	75	30.0	75%
SUPASLAT 5-81	19	70	81	100	23.8	81%

### STANDARD PANEL SIZES

The panel sizes typically come in 3 different lengths and widths.

**2980 x 300mm , 1480mm x 600mm ,  
1180mm x 600mm.**

### BESPOKE OPTIONS

The SupaSlat system is also typically manufactured to bespoke sizes to suit each individual project.

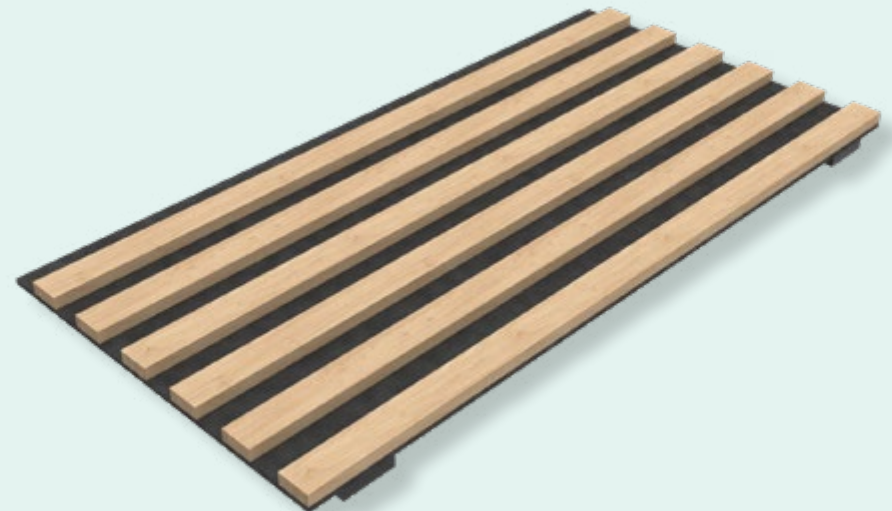
Our fully comprehensive 3D Modelling, CAD & Design Services take the brain pain out of intricate detailing and interfacing. This allows us to manufacturer to fine tolerances customised to your exact needs and specifications.

## 2 SLAT VISUALS

SUPASLAT 1-25



SUPASLAT 1-50





## 2 SLAT VISUALS

SUPASLAT 2-30



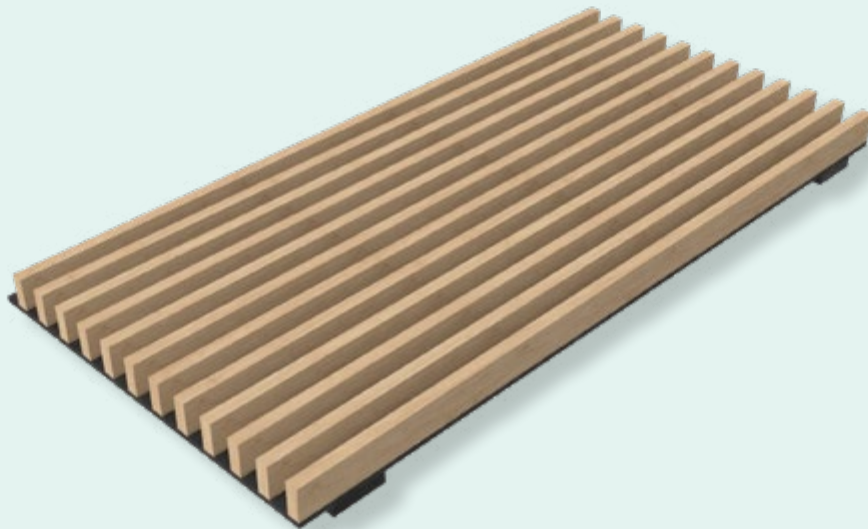
SUPASLAT 2-80



ILLUSTRATIONS ARE INDICATIVE DRAWINGS ONLY.

## 2 SLAT VISUALS

SUPASLAT 4-31



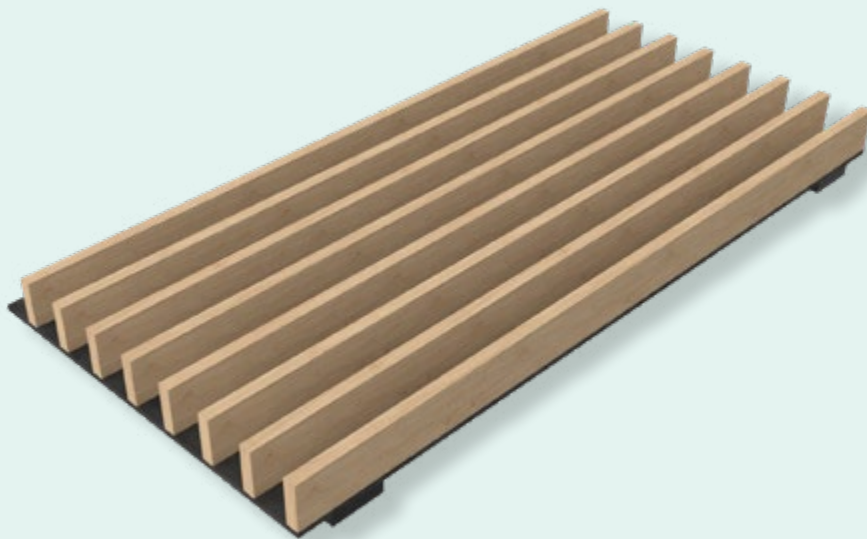
SUPASLAT 4-56





## 2 SLAT VISUALS

SUPASLAT 5-56



SUPASLAT 5-81

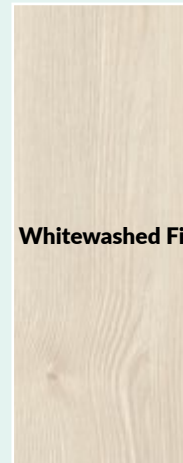


ILLUSTRATIONS ARE INDICATIVE DRAWINGS ONLY.

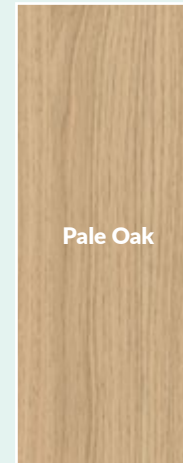


### 3 SELECT SUPALAMI FINISH

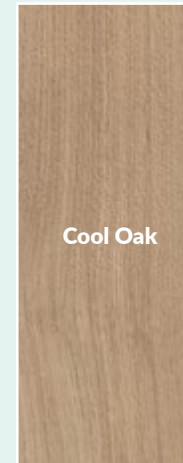
Supalami laminates are high-quality, hard-wearing and requires minimal maintenance. Supalami is FR Euroclass B rated (subject to substrate and adhesives), giving you assurance and confidence in your specification projects.



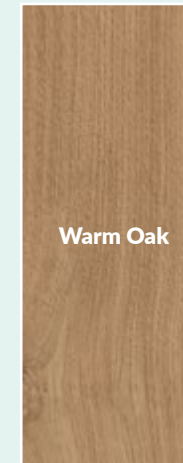
Whitewashed Fir



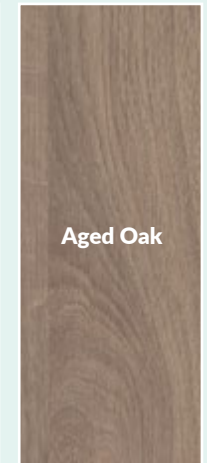
Pale Oak



Cool Oak



Warm Oak



Aged Oak



European Walnut



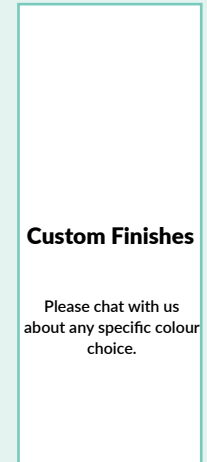
Smoked Oak



Black Woodgrain



Crisp White



Custom Finishes

Please chat with us  
about any specific colour  
choice.



## 4 SELECT ACOUSTIC BACKING COLOUR

**EchoTone-** A premium acoustic backing board is incorporated into the rear of the panel to provide acoustic absorption.

### **Budapest Black Acoustic Backing**

- Thickness = 9mm or 12mm thick

### **All other coloured Acoustic Backings**

- Thickness = 12mm thick

Please note that the coloured acoustic backing is 2400mm in length. Therefore for SupaSlat 2980mm panels there is a butt join on the acoustic backing. The slats are manufactured as 2980mm lengths.

**The Acoustic Backing board is PET based and contains 60% recycled content and is 100% recyclable.**

Further acoustic performance can be achieved by using bulk insulation as well.

Noise Reduction Coefficients (NRC) up to 1.0 can be achieved dependent on the selected SupaSlat configuration, void depth and insulation. Please speak to our Technical team for details and acoustic test data.



OUR MOST POPULAR ACOUSTIC BACKING COLOUR - BUDAPEST BLACK



ROTTERDAM RED



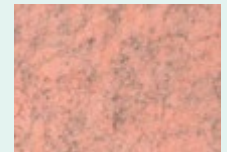
RICHMOND RED



ONTARIO ORANGE



OAKLAND ORANGE



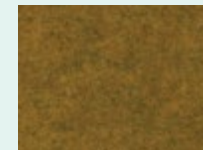
PANAMA PINK



YORKTOWN YELLOW



YOKOHAMA YELLOW



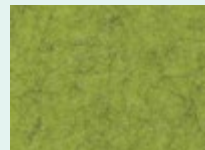
BOSTON BROWN



GENEVA GREEN



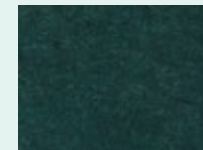
GIBRALTAR GREEN



GRENADA GREEN



TORONTO TEAL



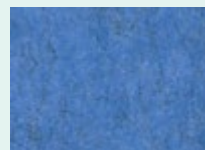
TOKYO TEAL



BOLOGNA BLUE



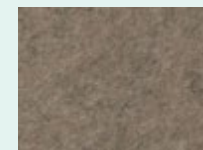
BALTIMORE BLUE



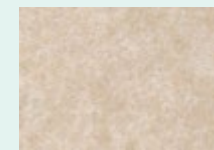
BARCELONA BLUE



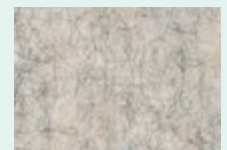
PALERMO PURPLE



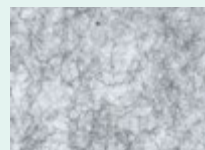
BROOKLYN BEIGE



BERLIN BEIGE



BOGOTÁ BEIGE



GLASGOW GREY



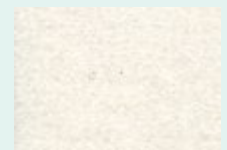
GENOA GREY



GRENOBLE GREY



GUADELOUPE GREY



WARSAW WHITE

## 5 SELECT FSC® REQUIREMENTS

### FSC® CERTIFICATION

FSC® Certification required (FSC® C160047).

### NO CERTIFICATION

FSC Certification not required.

Please talk to us about your specific requirements prior to quotation.

## FIRE COMPLIANCE



Supaslat's advanced fire-resistant construction and robust detailing can achieve a Euroclass B rating.

**Contact us regarding Fire Certification.**

## 6 ACCESS & SERVICE INTEGRATION

**FULLY REMOVABLE FOR ACCESS TO VOID**

**ACCESS HATCHES AT SPECIFIC LOCATIONS**

**HIDDEN DOORWAYS**

**LIGHTING**

**HVAC GRILLES**

**SMOKE DETECTORS & SPRINKLERS**

**AV SCREENS AND CABLING**

Please speak to our Technical team if removable panels are required for access to behind. Contact us to discuss bespoke installation requirements on 03307 00 00 30.







## 7 CHOOSE INSTALLATION METHOD

Our SupaSlat modules are designed to be simply and easily installed with the standard method being to Screw Fix to soffit / rack.

The SupaSlat system is engineered to be fastened to almost any form of construction in a wide variety of situations.

SupaSlat Screw Fix system enables simple fastening directly to:

Timber rails and frames

Unistrut

Casoline MF

Timber boards or sheets e.g. MF

This enables its use in Ceiling, Suspended Raft and Wall applications. Walling substrates include Concrete, Masonry or Timber framed or stud partitions.

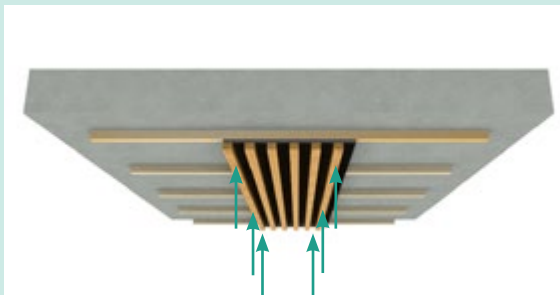


# FOR CEILINGS AND RAFTS

## SCREW FIX DIRECT TO SOFFIT OR RAILS



- 1.** Lift panel to pre-installed ceiling substrate / rails.

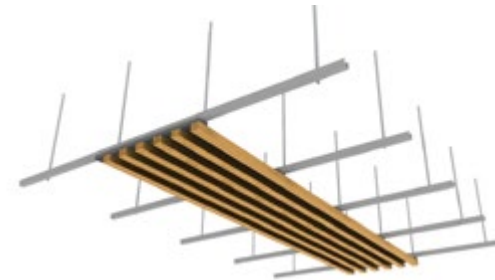


- 2.** Screw through the panel backing and cross battens directly to the substrate. Use discreet black screws in the black gap between the slats.

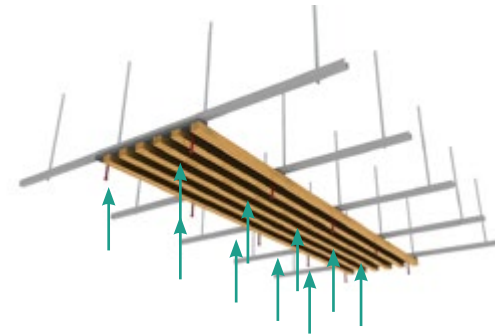


- 3.** Repeat for remaining panels. Cover edges with finishing strips if required.

## SCREW FIX TO SUSPENDED RAFT



- 1.** Lift panel to pre-installed supports (Unistrut, Timber or similar - shown here suspended on rods)



- 2.** Screw through the panel backing and cross battens directly to the substrate. Use discreet black screws in the black gap between the slats.



- 3.** Repeat for remaining panels. Cover edges with finishing strips if required.

# FOR WALLS

SupaSlat can be fastened to almost any common wall construction using the methods outlined.

- › Concrete
- › Brickwork or blockwork
- › Lightweight partition system
- › Timber stud partitions

For more help with installing SupaSlat walls please contact our technical team on 03307 00 00 30.

N.B. Panels can be fitted directly to some substrates and may not require rails - drawing is indicative only.

## CLICK FIX

BEST FOR EASE OF ACCESS AND DISCREET FITTING.

1

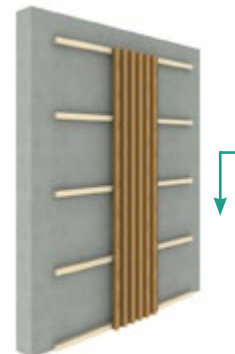


**1.** Fix the male parts to the wall substrate / rails, using the Click-Fix markers to position correctly.

**2.** Lift panels onto wall and 'Click' into place, engaging the female parts on the rear of the panel.

**3.** Repeat for remaining panels. Cover edges with finishing strips if required.

2



3





## FOR WALLS

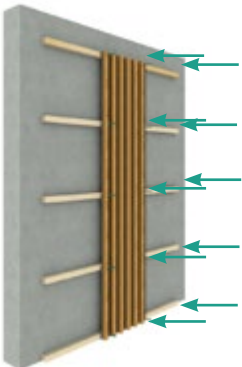
### SCREW FIX DIRECT TO SUBSTRATE

1



1. Lift panel to pre-installed wall substrate / rails.
2. Screw through the panel backing and cross battens directly to the substrate. Use discreet black screws in the black gap between the slats.
3. Repeat for remaining panels. Cover edges with finishing strips if required.

2

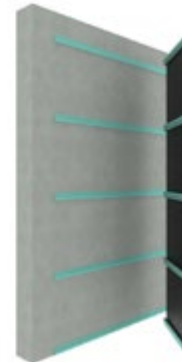


3



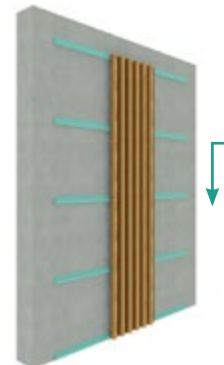
### HOCKEY STICK / SPLIT BATTEN

1

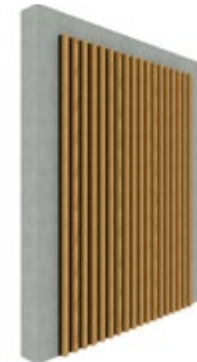


1. Install Hockey Sticks to wall substrate and panel rear in correct positions.
2. Lift panels onto Hockey Sticks and lower to engage.
3. Repeat for remaining panels. Cover edges with finishing strips if required.

2



3



# BREEAM EXCELLENT HISTORICAL SITE

## THE BRIEF

Experience the transformative journey with Vtec as we joined forces with a renowned Scottish University for their prestigious BREEAM excellent project. Our team took pride in revitalising century-old historical buildings and reconnecting a local community with the campus. With the university's commitment to low carbon goals and alternative energy sources, sustainability was paramount.

The challenge lay in harmonising diverse construction methods of concrete, timber, and brickwork within the site's heritage. Our solution seamlessly integrated these elements, respecting the past while embracing the future through a unifying walkway bridge. The new entrance building, a testament to architectural finesse, showcases Vtec's SupaSlat ceiling.

## DOUBLE HEIGHT ENTRANCE ZONE

The double-height entrance zone boasts a stunning fusion of architectural elements, from industrial windows to rustic brickwork. Vtec's SupaSlat slatted system elegantly spans both elevations, creating a grand, awe-inspiring atmosphere. Our CAD Team meticulously integrated large columns, lighting, and other M&E elements into the design, ensuring seamless incorporation while preserving the ceiling's beauty. Enhanced with Vtec's premium acoustic backing, it optimises sound control in the expansive space.

## SEAMLESS PROVISION FOR M&E







## CONNECTING THE OLD AND THE NEW

In the narrative of re-purposed buildings, each structure tells its unique story. A bridge was ingeniously crafted to interconnect these spaces, reflecting a theme of unity and innovation. Vtec's production and technical team addressed challenges, devising a practical yet aesthetically pleasing solution. A bespoke SupaSlat system was chosen, harmonising seamlessly with the ceiling's laminate surfaces.

Detailed configurations ensured symmetry, with vertical timber slats forming a U shape and adapting to the bridge's unique angles. Glass balustrades posed a challenge, but a bespoke installation method was devised. Vtec's premium acoustic backing controlled reverberated sound, while the Click Fix system facilitated vertical slat installation. The Screw Fix method secured the SupaSlat system to the bridge's framework, ensuring flawless execution of this bespoke project.

The site achieved a BREEAM Excellent rating. Vtec helped enable this by offering support right from the beginning, with technically driven ideas, continuous project management throughout the entire project journey and a fully supportive 3D drawing package ensuring ease and confidence to install.

# NEW OFFICE FOR CANARY WHARF GROUP

## THE BRIEF

The development of Canary Wharf has forever changed the skyline of London, turning the ramshackle Docklands area into one of the world's most prestigious business districts.

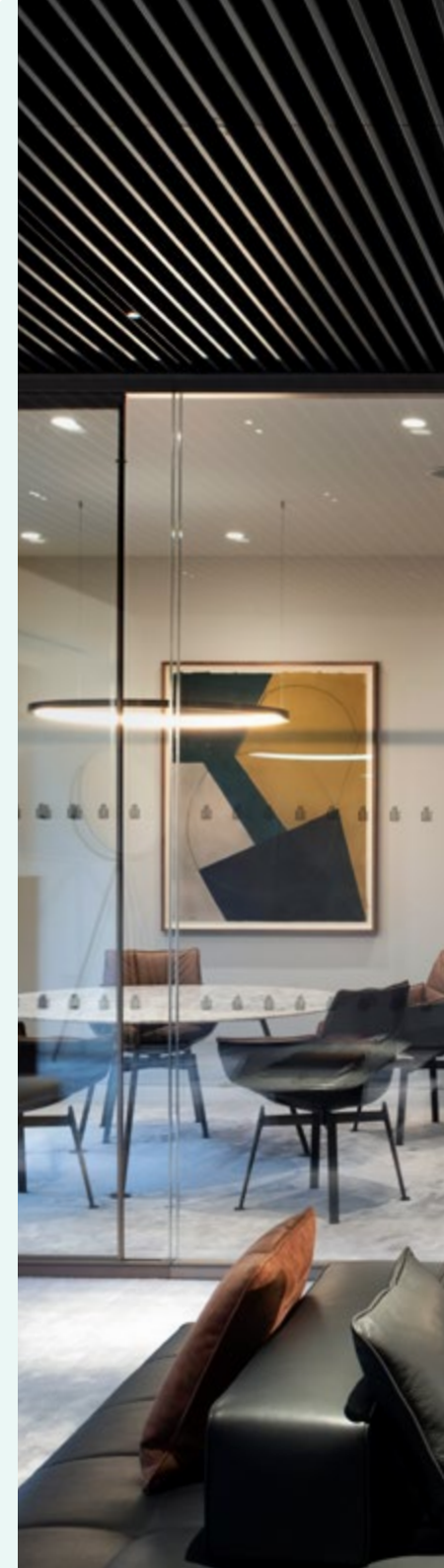
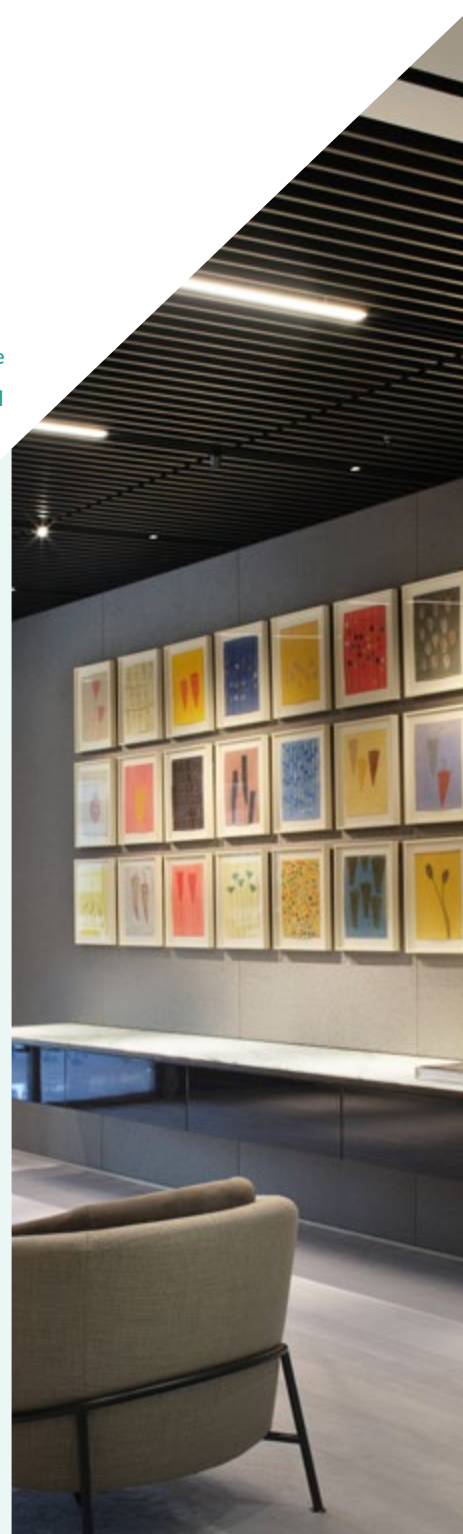
With continuous advancement, both within the estate and further afield, Canary Wharf Group plc has become one of the most reputed experts in "high-rise delivery". So, when the time came to update their own office premises, it was essential that the atmosphere reflected the Group's world-class status and superb achievements. Vtec Group's SupaSlat system was specified due to the intricate detailing, integrations, complex interfaces and technical nature of this project.

## SEAMLESS INTEGRATION

With a stunning mix of exquisite materials and superior finishes, this stylish office could be assumed to be the interior of a luxurious resort. Vtec's dark wood Supaslat slatted ceiling beautifully complements the soft carpets and elegant furnishings.

Designed for a seamless installation experience and easy integration of lighting, our Supaslat ceilings complete the sleek and sophisticated interior, echoing the superb quality of the building and the overall estate.

## A PREMIUM FINISH







## THE END RESULT

This project showcases bespoke timber slatted walls in the foyer and a unique feature staircase, whilst the post room is crowned with an impressive SupaSlat raft. Each area within this technical, architectural project was finished to a very high standard.

Working from a detailed 3D drawing package in order to finalise the custom designs and measurements required, our CAD team produced extensive technical drawings for the installation contractors.

We supported the designer, an industry-leading international Architect, and the Contractor, throughout the entire process from development of the concept design to installation, overcoming some particularly challenging programme requirements.

# ADDITIONAL RESOURCES

As manufacturers of our systems, we know the complexities of creating beautiful and functional designs.

These clickable guides are the best tools to support your learning and understanding of the systems we produce, and how easy it is to specify and install.



[VTECGROUP.CO.UK](https://vtecgroupproducts.co.uk)



[NBS SOURCE](#)



[HELP & ADVICE](#)



[SPECIFIEDBY](#)



[DATA SHEET &  
SPECIFICATION GUIDE](#)





**EASY INSTALLATION**

**EASY ACCESS TO SERVICES**

**ACOUSTIC PERFORMANCE**

**FR EUROCLASS B RATING**

**8 STANDARD CONFIGURATIONS**



# VTECGROUP.CO.UK

Contact our technical team to discuss your application, samples or other questions.  
We're here to help.

---

**Head Office and Manufacturing** Vtec Group Ltd, Unit 3  
Cooksland Industrial Estate, Bodmin, Cornwall, PL31 2QB

---

Call	03307 00 00 30
Email	<a href="mailto:sales@vtecgroup.co.uk">sales@vtecgroup.co.uk</a>
Visit	<a href="http://vtecgroup.co.uk">vtecgroup.co.uk</a>

---

