



MAKING
SPACES
MATTER

STONE PICTORIAL INSTALLATION GUIDE

STEP BY STEP VISUAL GUIDE TO EASY INSTALLATION

www.vtegroup.co.uk

info@vtegroup.co.uk

tel: 03307 00 00 30

STONE PICTORIAL INSTALLATION GUIDE

Please refer to the Stone Panel Installation Guide for full details and how to attach to various wall types.

POSITIONING OF THE PANELS

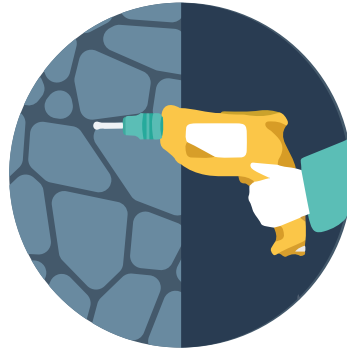
1



Measure, mark out and trim panels as required to align features.

LOCATING AND FASTENING PANELS

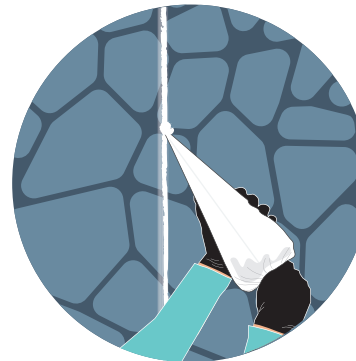
2



Raise or lower panels to align features. Pre-drill and screw in place, packing out to suit.

INITIAL FILLING AND SHAPING

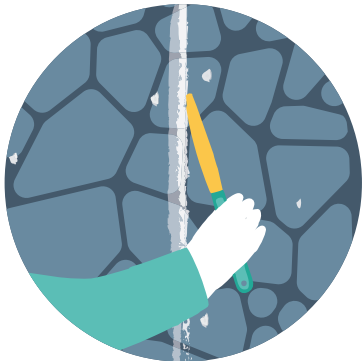
3



Use a grouting bag for the initial application of the jointing compound to cover joints and fixing locations.

INTRODUCE THE FINAL TEXTURE

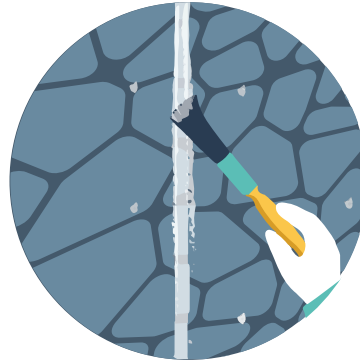
4



Shape the jointing compound to suit as it begins to go firm. The putty knife can also be used to apply the filler if required.

THE BLENDING PROCESS

5



Introduce final texture to the jointing compound with a brush moistened with the cleaner.

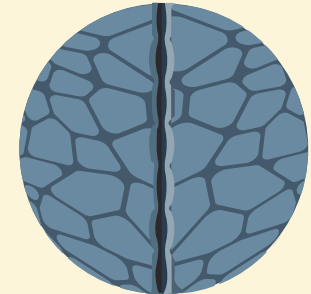
THE DETAILING

6



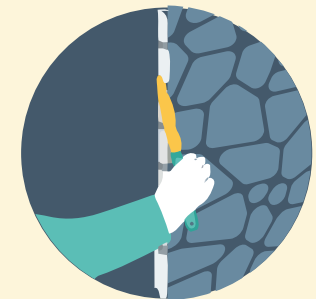
Leave for 24 hours. Sparingly apply colour solutions. Rag off, and then blend with surrounding area.

EXAMPLE DETAILS



CORNERS - Raise or lower panels to align features. Mark position of corner and cut to form mitre.

Fix panels, leaving approx. 5mm gap. Apply the jointing compound and shape to suit.



FINISHING EXPOSED EDGES - If panel end is exposed, use the jointing compound to fill panel edge and shape to create the stone end.