

TIMBER PANEL INSTALLATION - PICTORIAL

Please refer to Timber Panel Installation Guide for full details



1 Measure, mark out and trim panels as required to align features



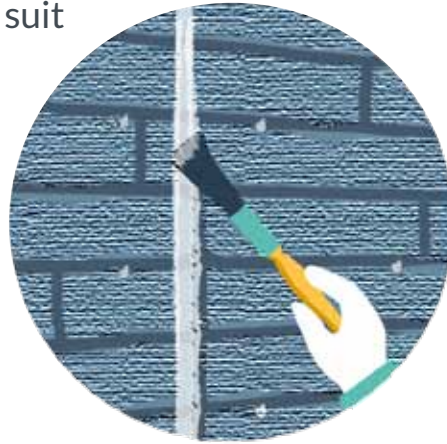
2 Raise or lower panels to align features, pre-drill and screw in place, packing out to suit



3 Roughly apply jointing compound to cover joints and fixing positions



4 Shape the jointing compound to suit as it begins to go firm

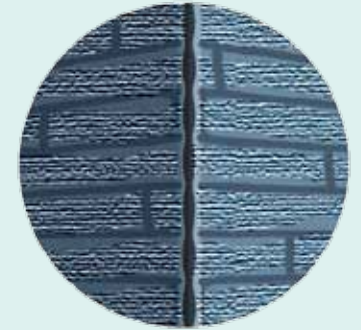


5 Introduce final texture to jointing compound with brush dipped in cleaner

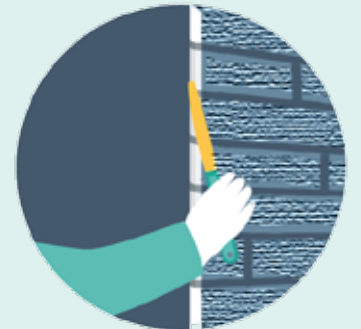


6 Leave for 24 hours, sparingly apply colour solutions, rag off and blend with surrounding area

EXAMPLE DETAILS



Corners - Raise /lower panels to align features. Mark position of corner, cut to form mitre. Fix panels leaving approx. 5mm gap, apply jointing compound and shape to suit



Finishing exposed edges - If panel end is exposed, use jointing compound to fill panel edge and shape as required