

USER AND INSTALLATION GUIDE

Vtecs **Metal Tiles** are an exciting design product for interior use.

In this Installation Guide, we take you through step-by-step the simple process of fitting the Metal Tiles and other information you need to be aware of when installing.

UNLOADING AND UNPACKING

When unloading the tiles, please ensure the boxes are handled carefully to prevent damage. Always wear protective gloves to protect against sharp edges.

HANDLING

Our Metal Tiles are 0.5 or 1.0mm thick, so care must be taken when handling to avoid damage to them, especially at corners and edges.

Be careful not to press too hard when adhering to the wall to avoid causing any creases or kinks. Always wear protective gloves when handling.

STORAGE

Store Tiles flat, removed from outer packaging, ideally 48 hours prior to installation.

SAFETY

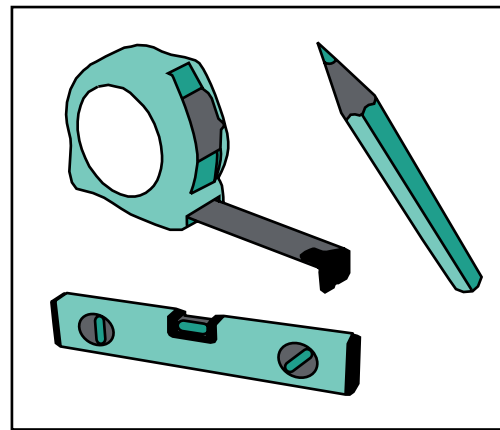
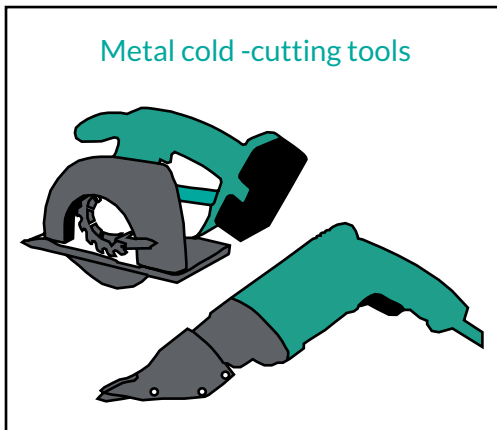
Always wear the correct protective clothing such as gloves, goggles, dust mask etc appropriate to your task and the general situation.

It is the installer's responsibility to check the location of all items such as cables, pipes, conduits or ducts prior to installation of the Tiles or supporting structure, and to ensure any fixing positions miss these locations.

Please note these details are indicative of many common situations, and you need to read these in conjunction with your detailed drawings and the specific site conditions.

METAL

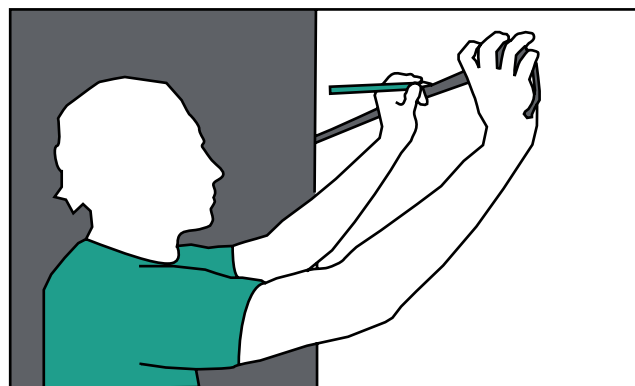
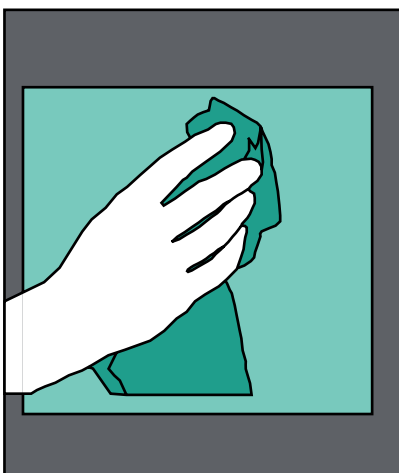
TOOLS REQUIRED



STEP 1

▲ PREPARING AND MEASURING

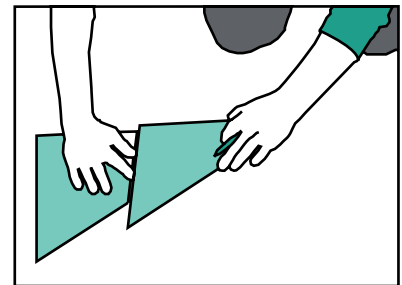
- Ensure that the surface the tiles are being attached to are sound and free from dust, grease or any substance that may impede adhesion.
- Measure the dimensions of the wall to be covered.



STEP 2

▲ MARKING OUT

- Lay out the tiles face up on a clean and flat surface, taking care to protect from damage from the hard edges of the tiles.
- Decide the best layout for your tiles, considering how the tiles will relate to each other. Move and rotate them until satisfied with the visual effect achieved.
- Compare the wall dimensions with your planned layout, and mark up any tiles requiring cutting.



HINTS:

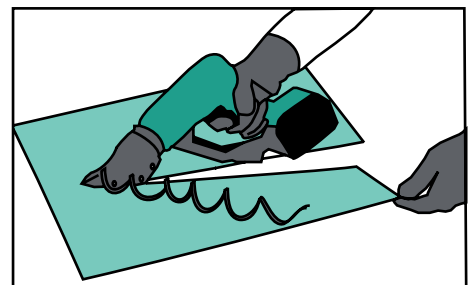
If wall to be covered is slightly higher than exact panel heights, use of-cuts for thin strips required to infill at top or bottom of whole panels. (Try to avoid thin horizontal strips at eye level).

Consider how other elements of the surroundings can work to your advantage, e.g. start with a vertical joint against a doorway, line up edges of the tile with another feature.

STEP 3

▲ CUTTING

- **NB: Take care to protect the tiles and all nearby surfaces from sparks or cutting swarf etc.**
- Cut accurately to the marks or use a template guide
- Ideally use a cold cutting tool, e.g. electric metal shears, a circular saw with correct cold cutting blade to suit the type of metal of the tiles.



Precautions: an angle grinder with thin metal cutting blade can potentially be used, but watch out for heat build-up which may potentially affect the special coating adjacent to the cuts.

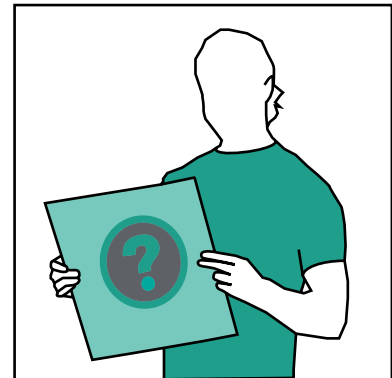
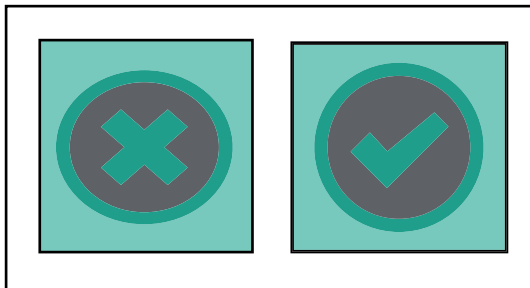
Please note that grinding sparks are hot and can potentially damage materials nearby if not adequately protected. Protective wear must always be used when cutting tiles.

STEP 4

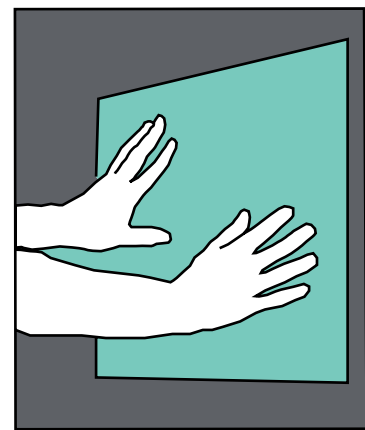
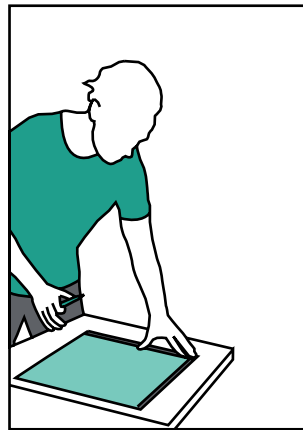
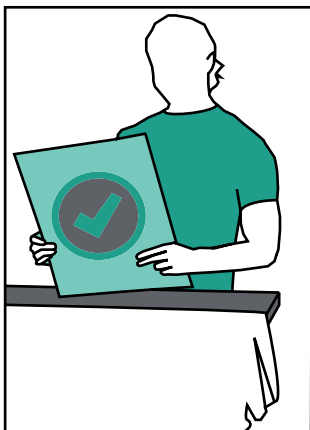
▲ ADHESION & APPLICATION TO WALL

(USING DOUBLE-SIDED SELF-ADHESIVE FOAM FROM VTEC)

- Ensure you have identified which face is the decoration finish. If in doubt call us on **03307 00 00 30**

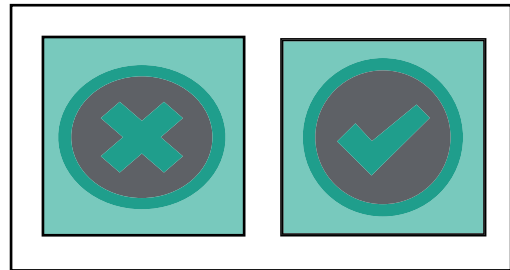
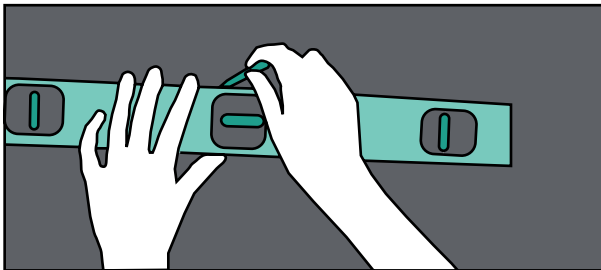


- Lay the face down on a clean flat surface, ensuring the surface and also the face of the tile are protected from damage.
- Press the tape uniformly onto the rear of the metal tile, taking care not to press too hard to avoid the risk of denting or creasing. Apply 25-50mm in from the edges of the Tile, and then strips in between at 250mm centres.
- Check the location is ready to receive the tile, offer the tile up to check positioning.
- Remove the backing from the tape and press the tile carefully onto the wall in the desired location.
- Apply gentle pressure until the tape is adhered, again, taking care not to press too hard to avoid the risk of denting

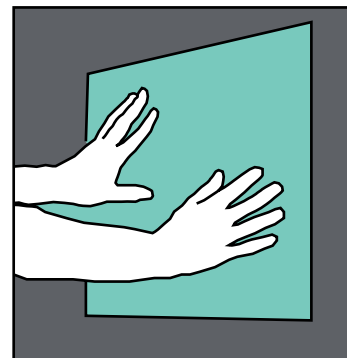
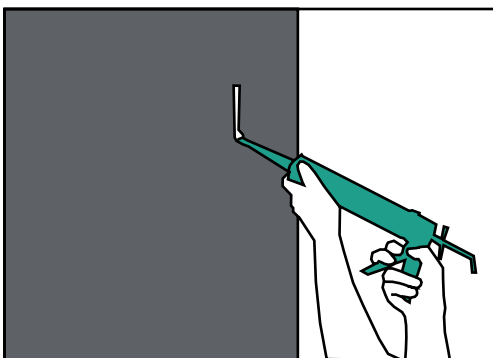


▲ ADHESION & APPLICATION TO WALL (USING CARTRIDGE SEALANT FROM VTEC)

- Mark the location of the joints on the wall
- Ensure you have identified which face is the decorative finish. If in doubt do not proceed to the next step, but call on **03307 00 00 30**.



- Apply the cartridge adhesive to the wall in zig-zag beads, approx. 100mm apart, keeping 50mm in from the edges of the tiles to avoid it spilling out.
- Check the location is ready to receive the tile, offer the tile up to check positioning.
- Apply gentle pressure until the adhesive has "grabbed", again, taking care not to press too hard to avoid the risk of denting.
- Support the panel while the adhesive sets - e.g. with double side adhesive tape and/or manually

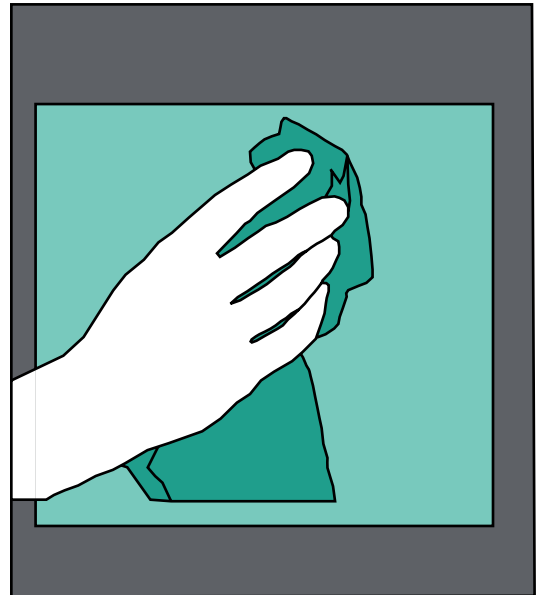
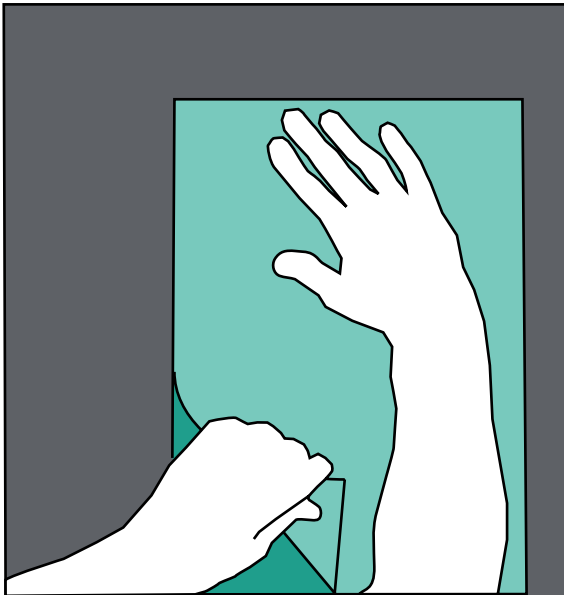


Precautions: Take care throughout the process to keep the front face of the tile clean. Ensure that sufficient adhesive tape is used to support the weight of the tile adequately

STEP 5

▲ FINISHING OFF

- Once the adhesion is complete, remove the protective film from the decorative face of the Tile
- If any adhesive or tape is attached to the face of the tiles, remove carefully ensuring you do not damage the finish.



▲ ADDITIONAL RECOMMENDATIONS FOR APPLYING METAL TILES TO CURVED SURFACES

- Make The Tiles must be bonded to a continuous pre-curved backing - not just battens.
- Use a suitable quick-curing high strength adhesive.
- Hold in position and restrain in place if necessary while adhesive cures.

If you have any queries on site, please call Technical on **0307 00 00 30**