

ARCTIC MOSS ISLANDS

USER AND INSTALLATION GUIDE

Welcome to interior design enhancement with Arctic Moss

Arctic Moss Islands are an exciting design product for interior use.

They are handmade from **natural** reindeer moss, which began its journey to you with careful hand-picking in the forest.

Then the moss was manually coloured and preserved, and finally it was integrated with an appropriate backing.

Like reindeer moss in nature, the coloured and preserved moss of the Islands reacts inherently to ambient humidity. These natural characteristic changes do not harm the product.

1 PRODUCT PACKAGE CONTENT FOR INSTALLATION

- Moss Islands
- Installation plate for attachment to wall
- Screw and wall plug

2 TYPICAL TOOLS NEEDED FOR INSTALLATION

- Spirit Level
- Tape Measure and Pencil
- Scissors or snap-off knife for cutting the product

PRECAUTIONS!

The product is meant for interior use only; it is not meant for consumption and should not be tasted or eaten. The product is not suitable for children or pets.

Plastic bags are used in the product's packaging; to avoid any danger of suffocation, keep these away from children and pets.

Always check for services (e.g. plumbing, gas or electrical wiring) behind the wall surface before drilling or fixing to it.

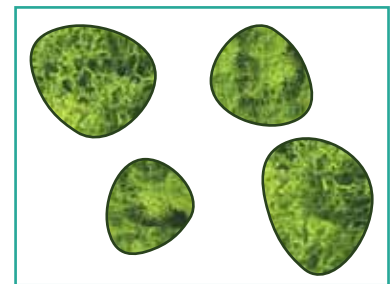
ARCTIC MOSS

ISLANDS

▲ PRIOR TO INSTALLATION

- 1 • Wear gloves when handling Arctic Moss
• Make sure the screw and wall plug are suitable for your wall material.
• Make sure the wall is suitable for drilling and solid enough to carry the weight of the product.
NB: Also see Precautions on page 1

- 2 Arrange the Arctic Moss Islands on a flat surface to plan the desired design of the installation. (Cover the surface with protective paper or plastic first).



- 3 Make sure the moss of the product is soft when installing it. If it has dried, spray a small amount of clean water on it from a mechanical spray bottle to soften it again. The moss will soften in about ten minutes.

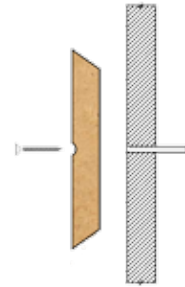
TO KEEP YOUR ARCTIC MOSS ISLANDS AT THEIR BEST, please note that :

- The product cannot be placed in direct contact with water.
- The moss of the product may be touched only with utmost care when the moss is dry. The moss dries and breaks easily when the relative humidity of the air is under 40%. Above that, the moss gradually starts to soften.
- Avoid placing the product in direct sunlight as this can cause some discolouration of the moss over time.
- Arctic Moss is virtually maintenance free, although if desired, it can be cleaned carefully with the dust brush of a vacuum cleaner at very low power. Try on a small section first to check that it won't damage the moss.
- Store the product in a plastic bag until fitted.
- Dispose of the product in general waste

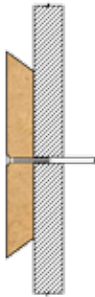
ARCTIC MOSS ISLANDS

▲ INSTALLATION OF ARCTIC MOSS ISLANDS

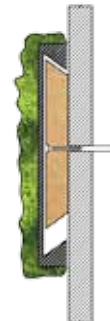
- 1 Decide on the location of the Island**
 - Measure the position of the Island on the wall.
 - Mark the position with a pencil.
 - Hold up the installation plate in the desired location



- 2 Fasten the Installation plate**
 - Make sure the installation plate is positioned with the smaller face against the wall to create a shoulder to retain the Island
 - Screw the installation plate direct to a timber wall.
 - If attaching to a masonry wall, drill a 6mm hole and insert a wall plug into the hole first, if to a plasterboard, then use an appropriate dry wall fixing.



- 3 Place the Arctic Moss Island**
 - Place the Island on the wall over the installation plate and allow to settle, ensuring that the Island hangs from the installation plate securely.



TIPS FOR USE:

- The installation plate of the product allows the position of the Arctic Moss Island to be adjusted on the wall by rotating it.
- Arctic Moss Islands are available in several colours and three different sizes; the shape in each size is slightly different. By clustering them, they add an extra dimension to interior decoration.
- Arctic Moss Islands also work well when used with Arctic Moss Spheres and Tiles.